

Radiosonde-No.11-MOC-CMA(2025)

Report on the Quality of Radiosonde Observations in Region II (Asia)

November 2025

Regional WIGOS Centre, Beijing

China Meteorological Administration

No. 46 Zhongguancun Nandajie

Beijing, CHINA

Contents

Introduction	1
1. Data Acquisition	1
2. Monitoring Standard	1
2.1 Geopotential Height	1
2.2 Vector Wind	3
2.3 Wind Direction	4
3. Monitoring Results	5
3.1 Non-Reporting Stations with Operational Status	5
3.2 Geopotential Height (GPH)	6
3.2.1 List of Suspect Stations	6
3.2.2 Suspect Station Analysis	7
3.3 Vector Wind (WIN_S)	15
3.3.1 List of Suspect Stations	15
3.3.2 Suspect Station Analysis	15
3.4 Wind Direction (WIN_D)	16
3.4.1 List of Suspect Stations	16
3.4.2 Suspect Station Analysis	16
4. Comparison with Other Results	17
5. Possible Causes of Remarkable Biases	17
Technical Support	17

Report on the Quality of Radiosonde Observations in Region II (Asia)

November 2025

Introduction

In its role as a Regional WIGOS Centre (RWC) in Regional Association (RA) II, China Meteorological Administration (CMA) has issued the monthly report on the radiosonde observation quality monitoring of November 2025. The report includes a consolidated list of suspect stations that produced low-quality observation data.

CMA was designated as a Regional WIGOS Centre in RA II. The Centre is responsible for monitoring the quality of meteorological observations and maintaining consolidated lists of suspect stations of reporting low-quality observation data together with adequate evidence. The lists are to be passed on to the WMO secretariat and monitoring centres participating in the activity as well as to Members of RA II for their reference.

1. Data Acquisition

Radiosonde observation data are collected at GTS, including 2 times: 00 and 12(UTC). The observation elements are geopotential height(GPH), vector wind (WIN_S) and wind direction (WIN_D).

2. Monitoring Standard

2.1 Geopotential Height

*Standard of comparison: First guess field from CMA_GFS model

*Observation times: 00, 12 UTC

*Levels monitored: Standard levels from 1000 - 30 hPa

*Element monitored: Geopotential Height (m)

*Parameters monitored:

NUM OBS: Number of observations received excluding duplicates

NUM GRS: Number of observations with gross errors

% REJ: Percentage of observations rejected by quality control

SD: Standard deviation of differences of observations from first guess field

BIAS: Mean difference of observations from first guess field

RMS: Root mean square of differences of observations from first guess field

(SD, BIAS and RMS are estimated excluding observations with gross errors)

*GROSS ERROR LIMIT:

Level (hPa)	Geopotential Height (m)
1000	100
925	100
850	100
700	100
500	150
400	175
300	200
250	225
200	250
150	275
100	300
70	375
50	400
30	450

***SELECTION CRITERIA:**

at least 3 levels with NUM OBS \geq 10 and 100 m weighted RMS

only the worst level is shown (with unweighted RMS)

2.2 Vector Wind

*Standard of comparison: First guess field from CMA_GFS model

*Observation times: 00, 12 UTC

*Levels monitored: Standard levels from 1000 - 100 hPa

*Element monitored: Vector Wind (m/s)

*Parameters monitored:

NUM OBS: Number of observations received excluding duplicates

NUM GRS: Number of observations with gross errors

% REJ: Percentage of observations rejected by quality control

U,V BIAS: Mean difference of observations from first guess field

RMS: Root mean square of differences of observations from first guess field

(BIAS and RMS are estimated excluding observations with gross errors)

***GROSS ERROR LIMIT:**

Level (hPa)	Vector Wind (m/s)
1000	35
925	35
850	35
700	40
500	45
400	50
300	60
250	60
200	50
150	50
100	45

***SELECTION CRITERIA:**

at least 1 level with NUM OBS \geq 10 and RMS \geq 15 m/s

standard level (1000 - 100 hPa) with highest RMS is shown

2.3 Wind Direction

*Standard of comparison: First guess field from CMA_GFS model

*Observation times: 00, 12 UTC

*Levels monitored: Standard levels from 500 - 150 hPa

*Element monitored: Wind Direction (degrees, clockwise)

*Parameters monitored:

NUM OBS: Minimum number of observations received excluding duplicates at each level

(excluding gross errors and data with wind speed $<$ 5 m/s)

BIAS: Mean difference of observation from first guess field, averaged over the monitoring levels

MAX SPREAD: Maximum absolute difference of SD at any level from SD at all levels

SD: Standard deviation of differences of observations from first guess field at all levels

(BIAS, MAX SPREAD and SD are estimated excluding observations with gross errors and low wind speed)

*GROSS ERROR LIMIT:

Level (hPa)	Wind Direction ($^{\circ}$)
500	45
400	50
300	60
250	60
200	50
150	50

***SELECTION CRITERIA:**

- NUM OBS \geq 5 and
- |BIAS| \geq 10 degrees with
- SD < 30 degrees and
- MAX SPREAD < 10 degrees

3. Monitoring Results

3.1 Non-Reporting Stations with Operational Status

Table 1 List of non-reporting stations with operational status from November

INDEX	STATION_CODE	STATION_NAME	MEMBER	LAT	LON
1	24944	OLEKMINSK (24944-1)	Russian Federation	60.37	120.42
2	31168	AYAN	Russian Federation	56.45	138.15
3	32150*	JUZHNO-SAHALINSK	Russian Federation	46.95	142.72
4	38507	TURKMENBASHI (38507-1)	Turkmenistan	40.03	52.98
5	38836	DUSHANBE	Tajikistan	38.58	68.73
6	38954	KHOROG	Tajikistan	37.50	71.50
7	40650	BAGHDAD INT. AIRPORT	Iraq	33.30	44.40
8	40745*	MASHHAD	Iran, Islamic Republic of	36.24	59.63
9	40754*	TEHRAN-MEHRABAD	Iran, Islamic Republic of	35.69	51.31
10	40875	BANDARABBASS	Iran, Islamic Republic of	27.21	56.37
11	40938	HERAT	Afghanistan	34.22	62.22
12	40948	KABUL AIRPORT	Afghanistan	34.55	69.22
13	41594	SARGODHA (41594-0)	Pakistan	32.05	72.67
14	41661	QUETTA (SHEIKH MANDA)	Pakistan	30.27	66.92
15	41780	KARACHI AIRPORT	Pakistan	24.90	67.13
16	43041	JAGDALPUR	India	19.08	82.03
17	43311	AMINIDIVI	India	11.12	72.73

18	43333	PORT BLAIR	India	11.67	92.72
19	43369	MINICOY	India	8.28	73.06
20	47600*	WAJIMA	Japan	37.39	136.90
21	48042*	MANDALAY	Myanmar	21.94	96.09
22	48097*	YANGON	Myanmar	16.86	96.15

This list includes the non-reporting stations with operational status during November, please check the status of the stations. If it is closed or silent, please update the declared status in OSCAR/Surface. In addition, “*” represents GBON station.

3.2 Geopotential Height (GPH)

3.2.1 List of Suspect Stations

Table 2 List of GPH suspected in November 2025

INDEX	STATION_CODE	MEMBER	OBS TIME	LEVEL	NUM OBS	NUM GRS	REJ (%)	BIAS	SD	RMS
1	23933*	Russian Federation	00	50	13	0	0	-114	75.2	136.6
2	25913*	Russian Federation	00	30	22	0	0	174.2	105.9	203.8
3	25913*	Russian Federation	12	30	19	0	0	151.6	95.6	179.2
4	31770*	Russian Federation	00	200	27	1	0	61.8	68.8	92.5
5	36003*	Kazakhstan	00	50	11	0	0	74.8	103.2	127.4
6	36003*	Kazakhstan	12	70	17	0	0	28.8	137.8	140.7

3.2.2 Suspect Station Analysis

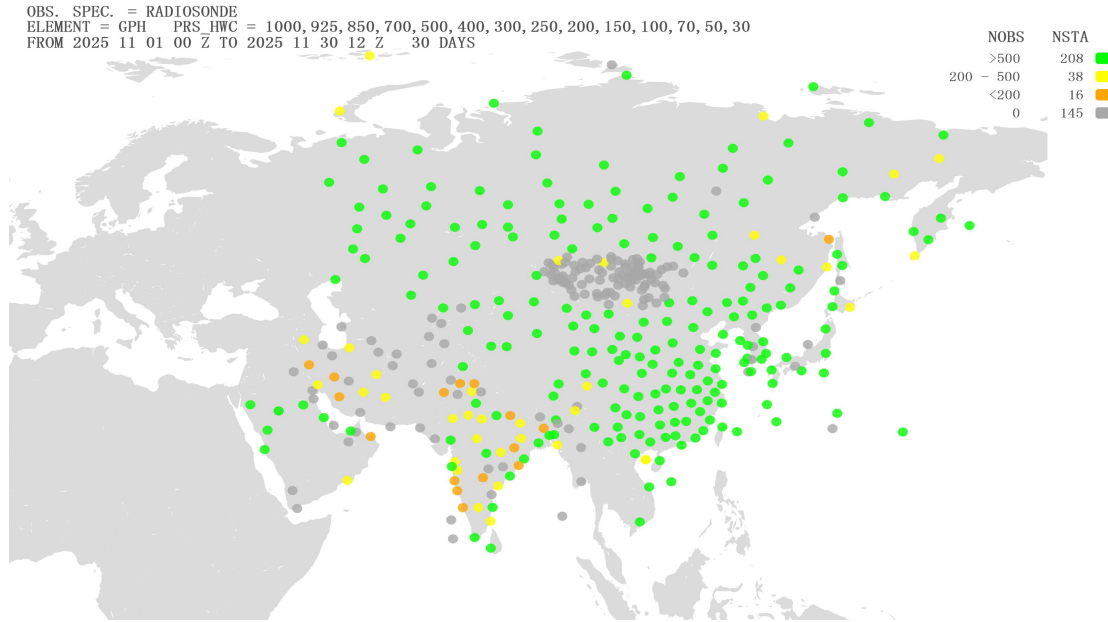


Figure 1 Location of all radiosonde stations reporting geopotential height observations in Region II over the month of November 2025. NOBS shows the total number of observations received at RWC-Beijing, corresponding total number of stations (NSTA) and color scale are shown at the top of the figure, color green refers to NOBS is higher than 500, color yellow refers to NOBS is between 200 and 500(including 500), color orange refers to NOBS is between 0 and 200(including 200), and color gray refers to NOBS is 0

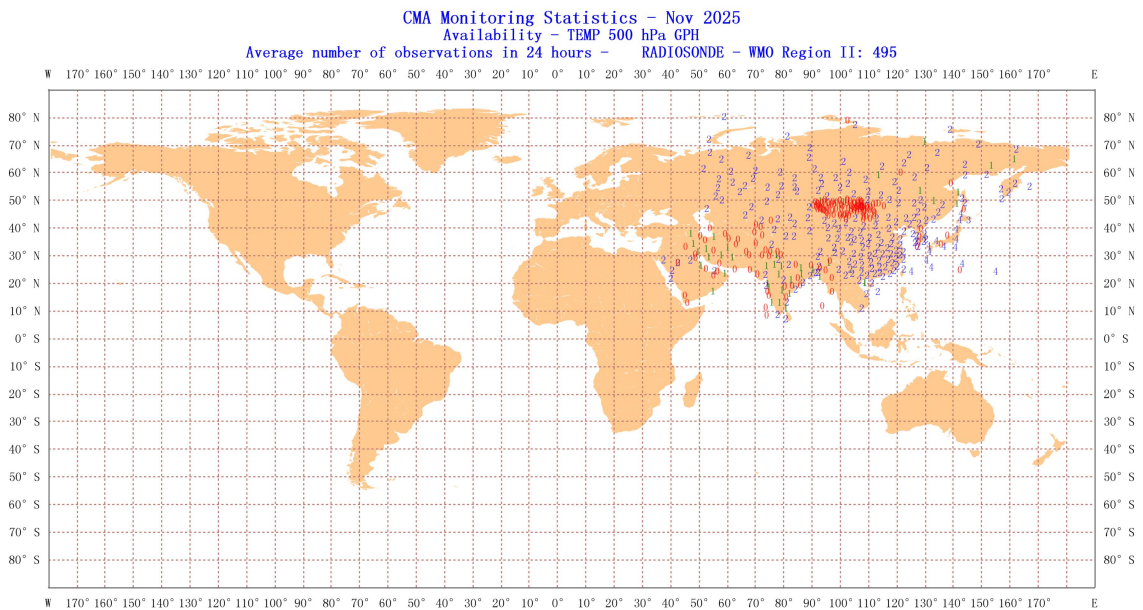


Figure 2 Location of all radiosonde stations reporting geopotential height average number of observations in 24 hours in Region II over the month of November 2025

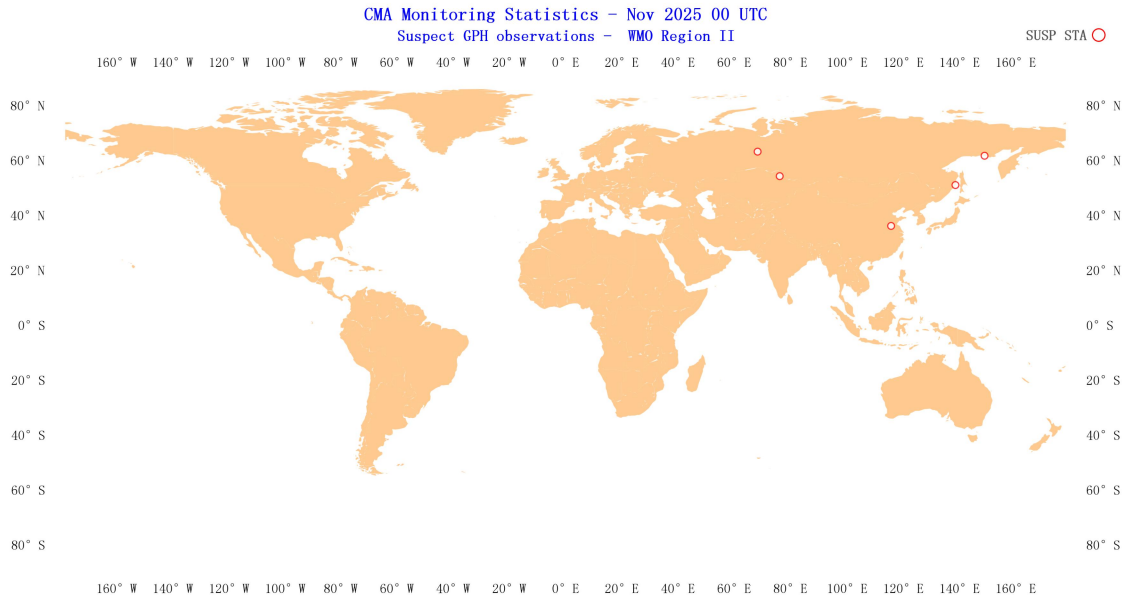


Figure 3 Distribution of suspect stations - Geopotential Height 00 UTC

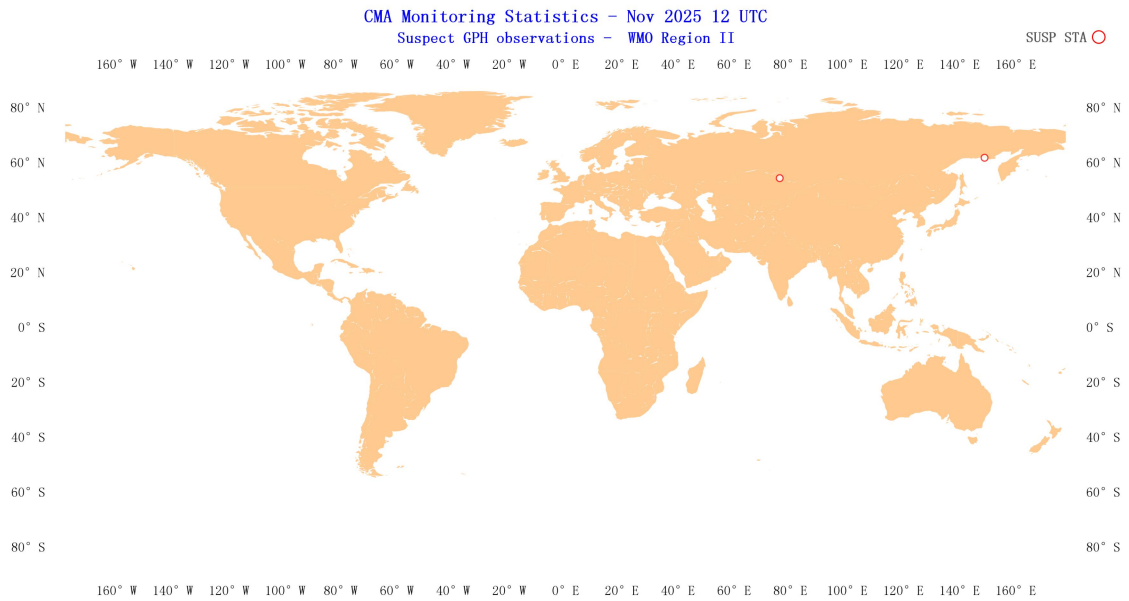


Figure 4 Distribution of suspect stations - Geopotential Height 12 UTC

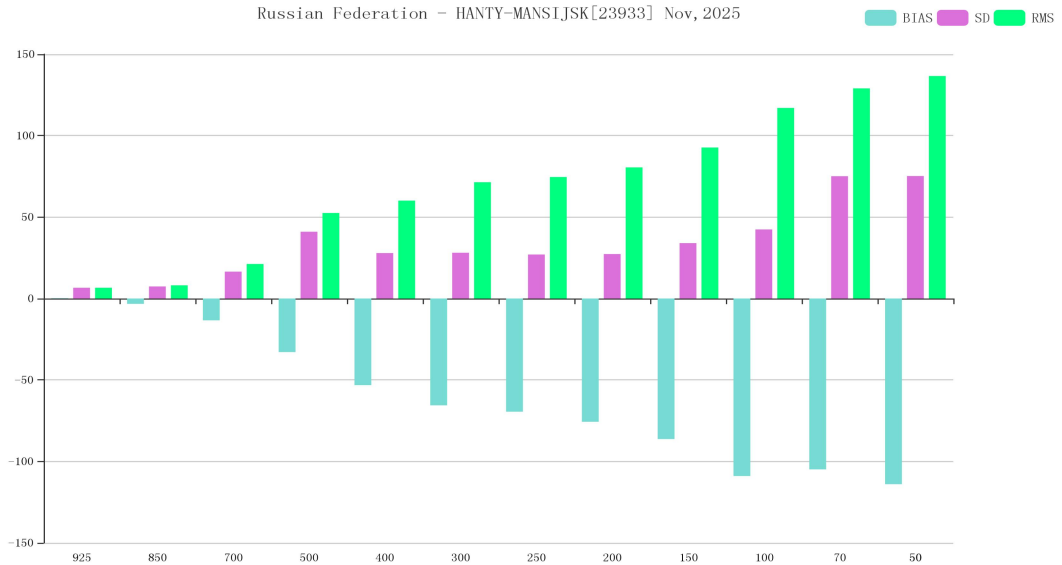


Figure 5 BIAS、SD and RMS of GPH for station 23933*(OBS-TIME:00)

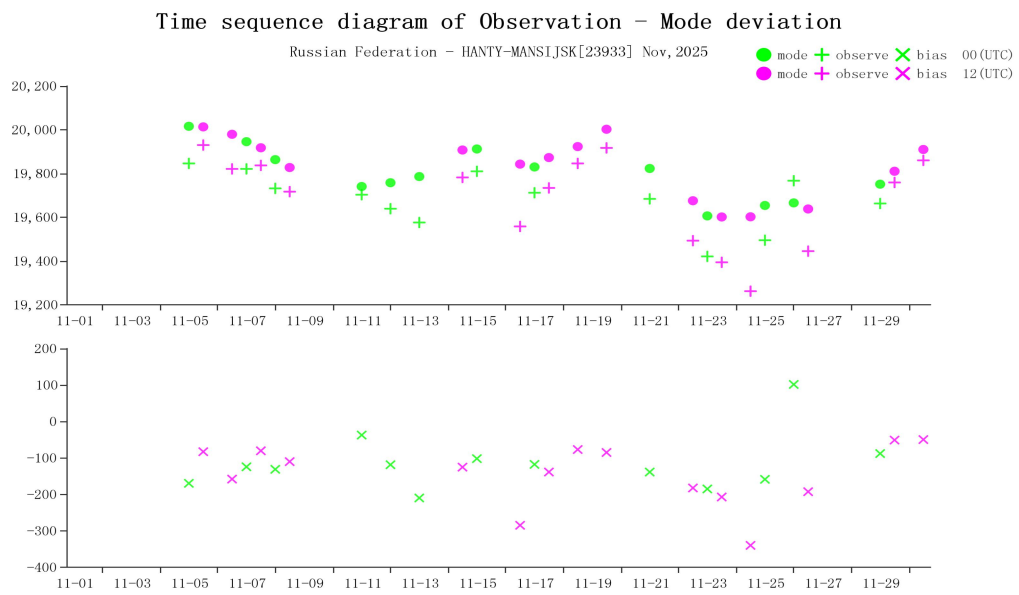


Figure 6 Time-series representation of GPH Obs minus first guess for station 23933*(Level:50)

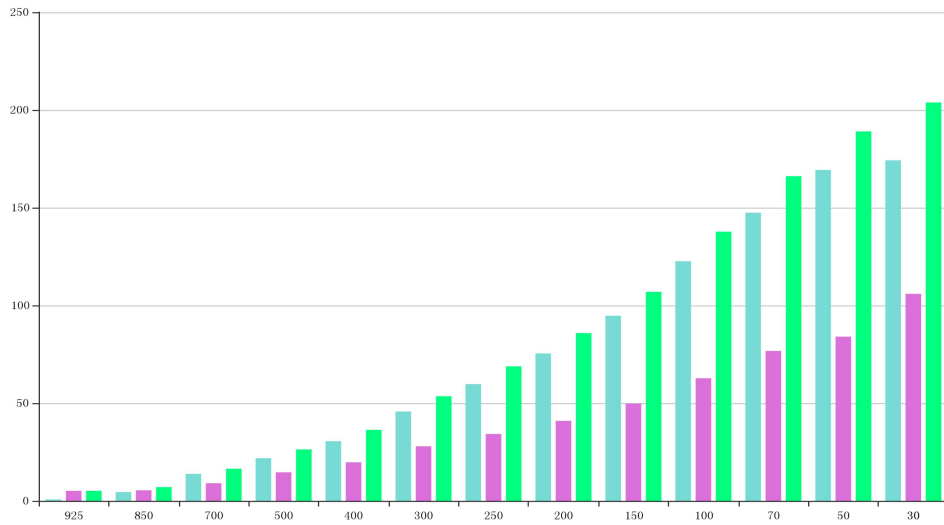


Figure 7 BIAS、SD and RMS of GPH for station 25913*(OBS-TIME:00)

Time sequence diagram of Observation - Mode deviation

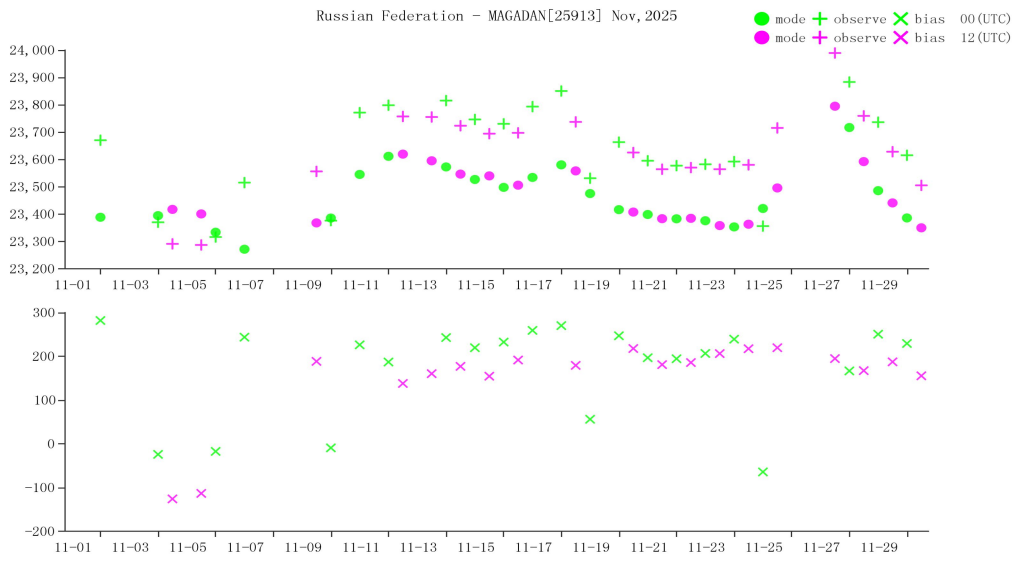


Figure 8 Time-series representation of GPH Obs minus first guess for station 25913*(Level:30)

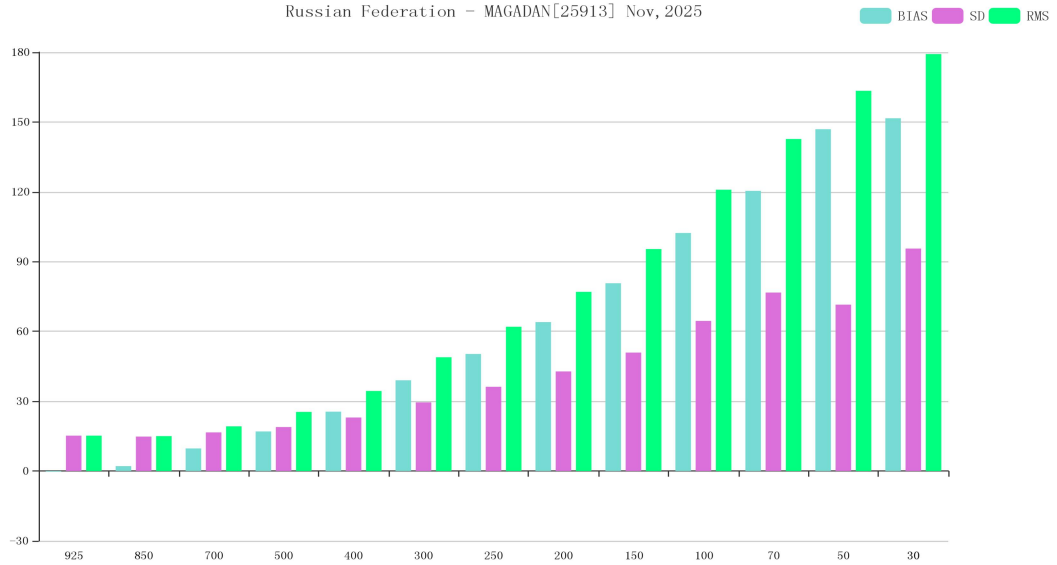


Figure 9 BIAS、SD and RMS of GPH for station 25913*(OBS-TIME:12)

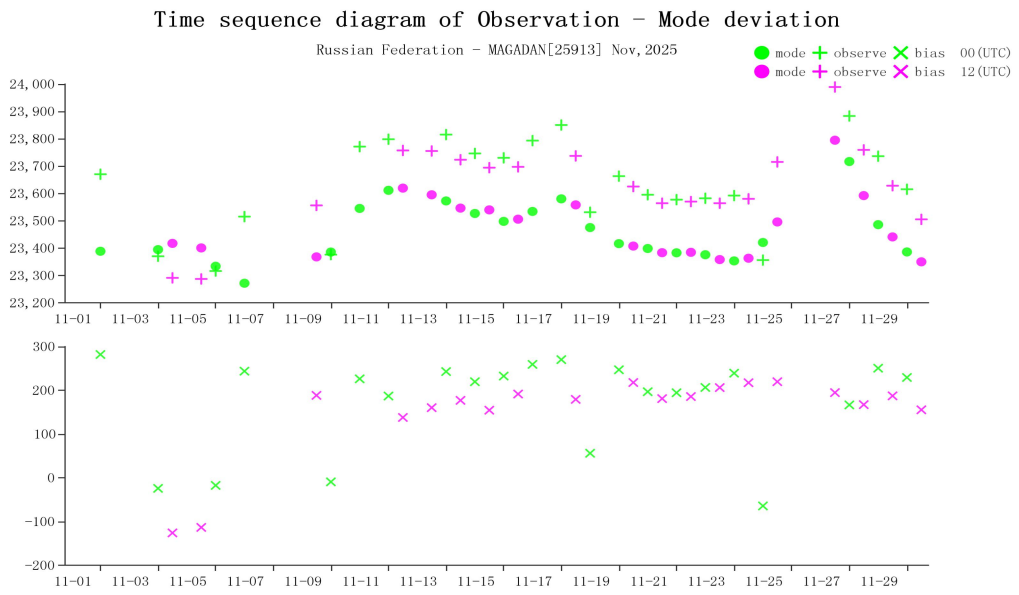


Figure 10 Time-series representation of GPH Obs minus first guess for station 25913*(Level:30)

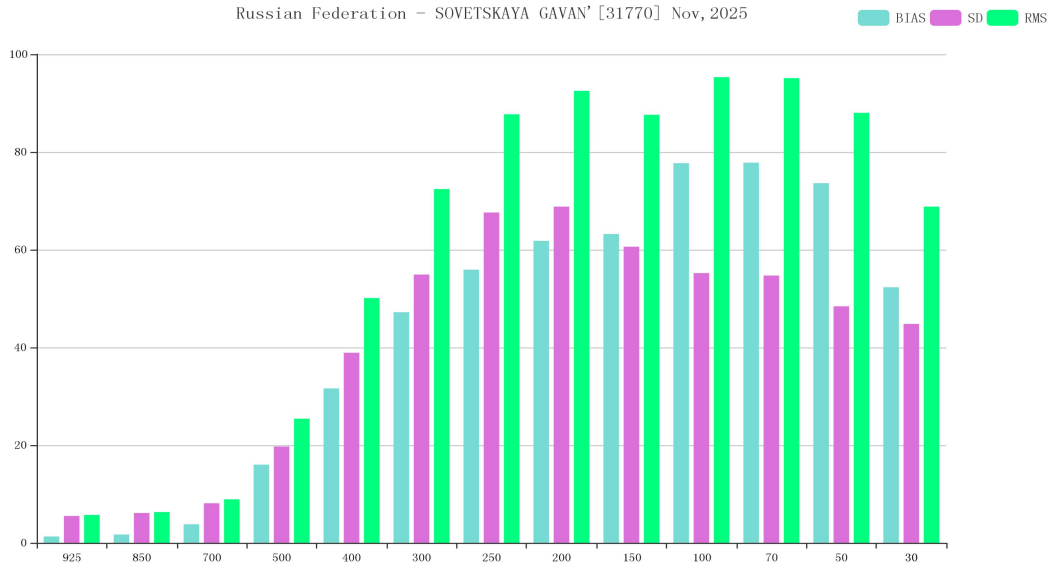


Figure 11 BIAS、SD and RMS of GPH for station 31770*(OBS-TIME:00)

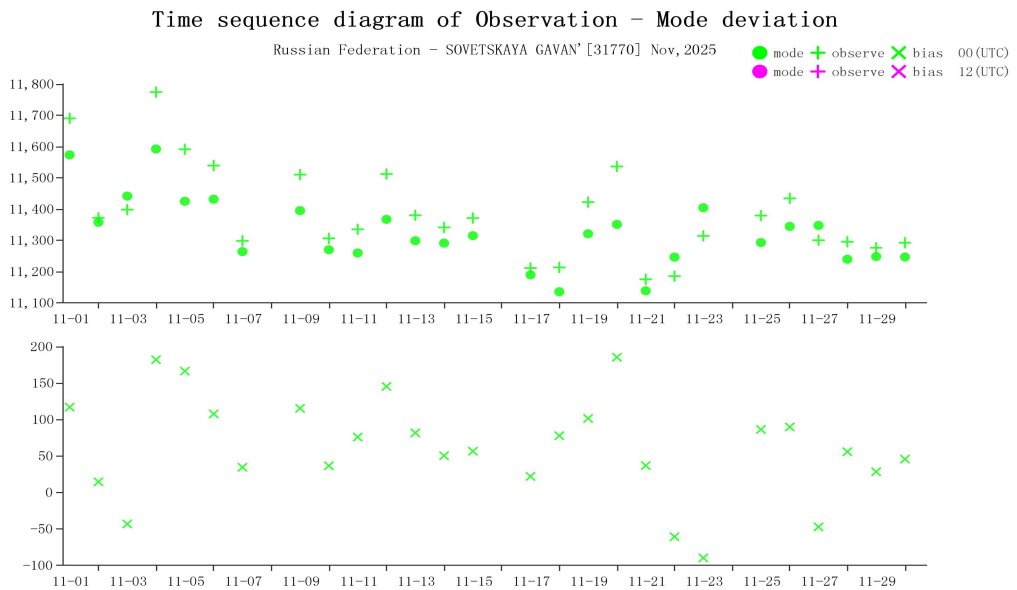


Figure 12 Time-series representation of GPH Obs minus first guess for station 31770*(Level:200)

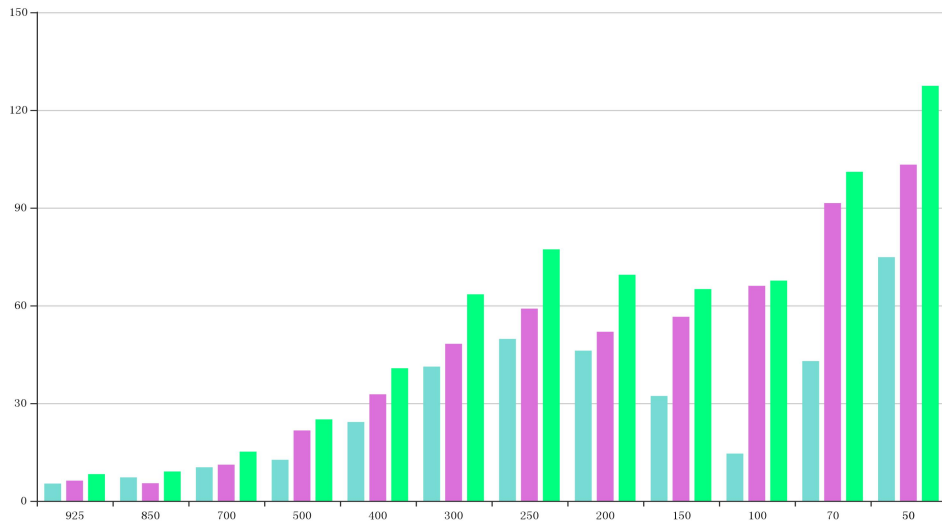


Figure 13 BIAS、SD and RMS of GPH for station 36003*(OBS-TIME:00)

Time sequence diagram of Observation - Mode deviation

Kazakhstan - Pavlodar AS[36003] Nov, 2025

mode + observe X bias 00 (UTC)
 mode + observe X bias 12 (UTC)

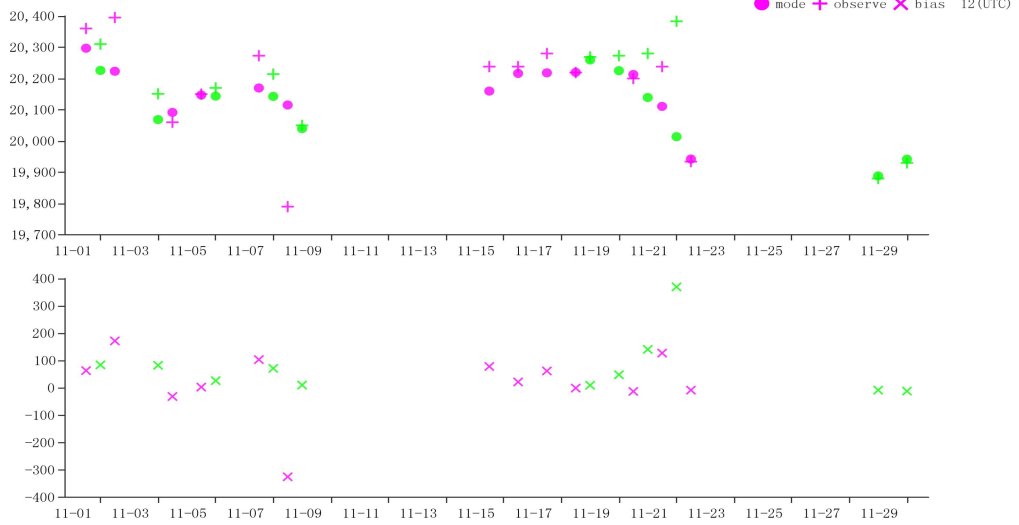


Figure 14 Time-series representation of GPH Obs minus first guess for station 36003*(Level:50)

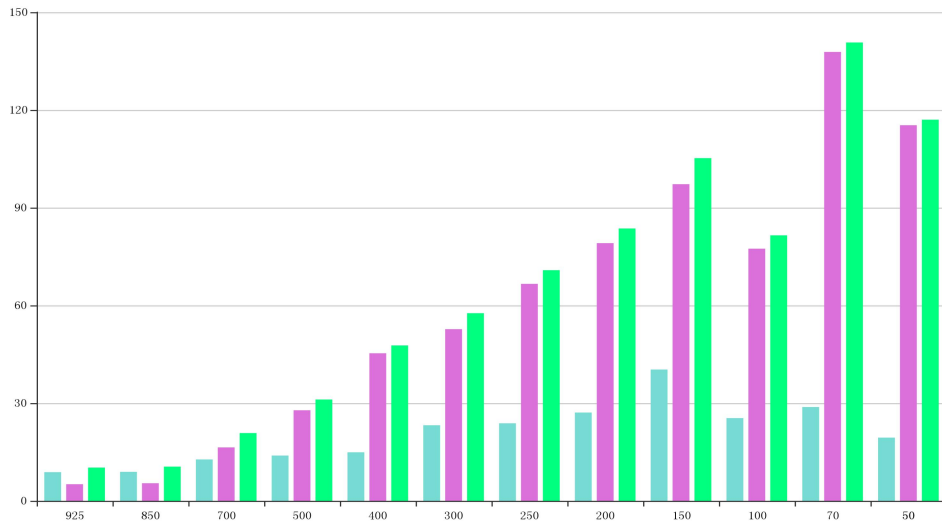


Figure 15 BIAS、SD and RMS of GPH for station 36003*(OBS-TIME:12)

Time sequence diagram of Observation - Mode deviation

Kazakhstan - Pavlodar AS[36003] Nov, 2025

● mode + observe × bias 00 (UTC)
● mode + observe × bias 12 (UTC)

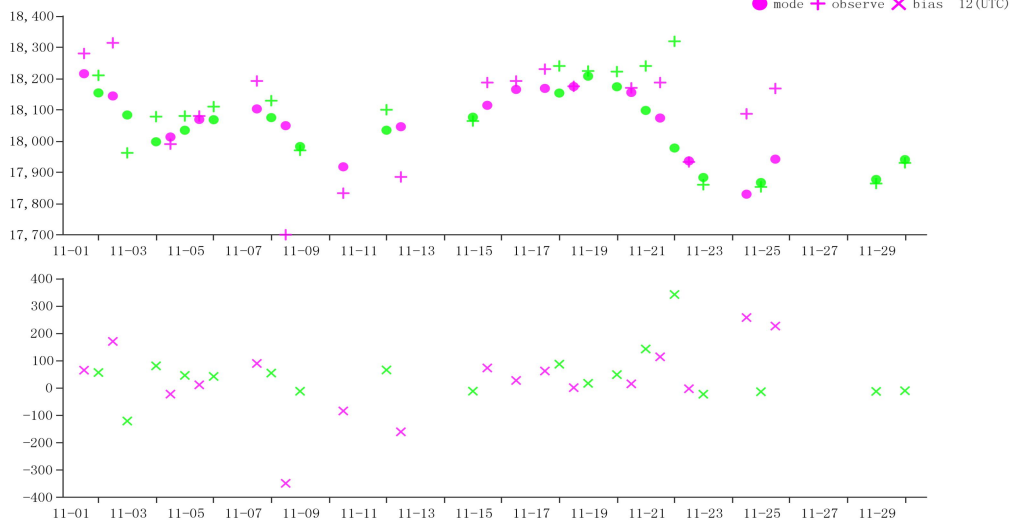


Figure 16 Time-series representation of GPH Obs minus first guess for station 36003*(Level:70)

3.3 Vector Wind (WIN_S)

3.3.1 List of Suspect Stations

No suspect stations.

3.3.2 Station Analysis

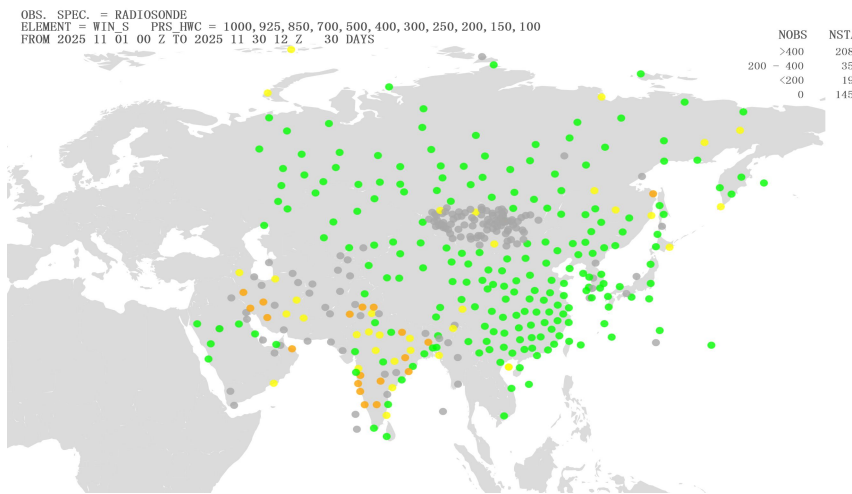


Figure 17 Location of all radiosonde stations reporting vector wind observations in Region II over the month of November 2025. NOBS shows the total number of observations received at RWC-Beijing, corresponding total number of stations (NSTA) and color scale are shown at the top of the figure, color green refers to NOBS is higher than 400, color yellow refers to NOBS is between 200 and 400(including 400), color orange refers to NOBS is between 0 and 200(including 200), and color gray refers to NOBS is 0

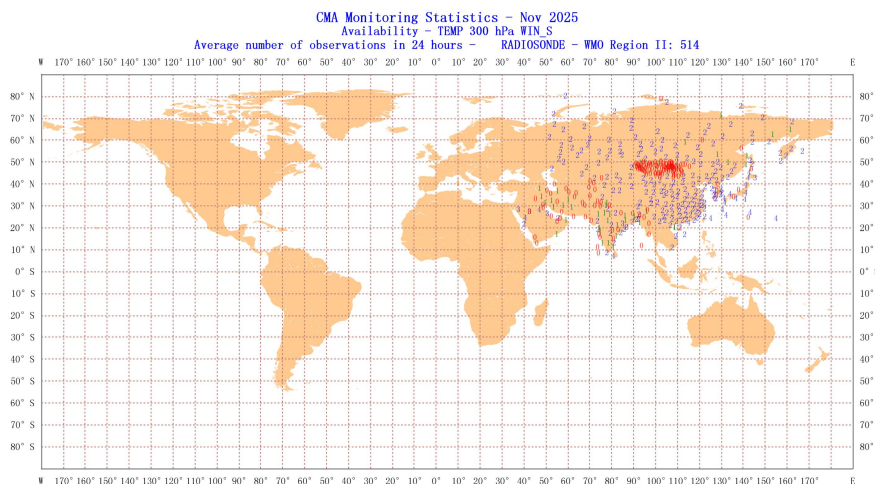


Figure 18 Location of all radiosonde stations reporting vector wind average number of observations in 24 hours in Region II over the month of November 2025

3.4 Wind Direction (WIN_D)

3.4.1 List of Suspect Stations

No suspect stations.

3.4.2 Station Analysis

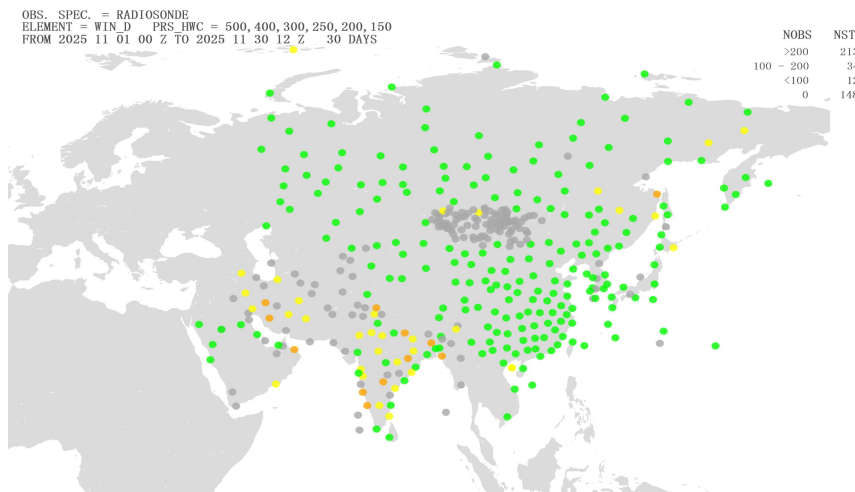


Figure 19 Location of all radiosonde stations reporting wind direction observations in Region II over the month of November 2025. NOBS shows the total number of observations received at RWC-Beijing, corresponding total number of stations (NSTA) and color scale are shown at the top of the figure, color green refers to NOBS is higher than 200, color yellow refers to NOBS is between 100 and 200(including 200), color orange refers to NOBS is between 0 and 100(including 100), and color gray refers to NOBS is 0

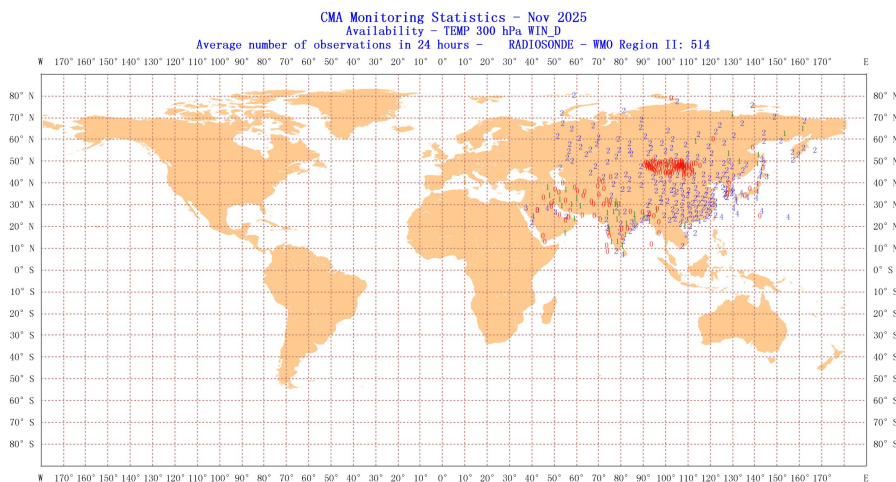


Figure 20 Location of all radiosonde stations reporting wind direction average number of observations in 24 hours in Region II over the month of November 2025

Tel: 86-10-58991513

E-mail: rwcbj@cma.gov.cn

Regional WIGOS Centre in RA II (Beijing)

CMA Meteorological Observation Centre